

**Notes:**

- Line taps shall be made in the galvanized trough by the electrical contractor.  
No more than (2) conductors per phase shall be allowed.
- No more than (2) risers will be connected per installation.
- Weatherproof fittings required.
- Wire sized to total disconnect sizes.
- Neutral(s) may be reduced no more than two sizes on residential application. No reduction of the neutral is allowed on commercial application.
- Bluebonnet pole must remain free of structures and private attachments other than meter loop riser assembly.
- Meter assembly must remain unenclosed on exterior of structure.
- Meter assembly cannot be mounted on a mobile home.
- If secondary service exceeds (2) 2", 3", or 4" approved electrical metal conduit; BEC will install a primary underground transformer at member's expense.
- Maintain 3"-6" distance between the disconnect and the meter can. Member shall use a metal nipple. A straight or offset nipple is acceptable.
- #6 solid, bare ground copper wire and clamp attached to Bluebonnet's pole ground.
- The main electrical disconnect for each electrical service shall be installed on the exterior of the building in a location approved by Bluebonnet Electric Cooperative.

Ⓐ Transformer Pole Riser Length:  
35' Pole = 20' Riser  
40' Pole = 24' Riser

Ⓑ Service Pole Riser Length:  
30' Pole = 20' Riser  
35' Pole = 24' Riser

Ⓒ Member's Conduit  
Member's conduit shall be installed 8"-12" from pole.

RISER ONLY

Only 2", 3", or 4" approved electrical metal conduct allowed above finished grade. Risers will not exceed 2 risers per pole. Member will provide 10' of conductor tails from top of weatherhead. BEC to supply Stand-Offs. (Bluebonnet to mount risers to pole)

FOR THREE PHASE APPLICATIONS

DESCRIPTION:

200amp, 7 terminal, 3-phase, 4-wire will require a lever by-pass meeting ANSI C12.7, UL 414, and NEMA 3R. Meter cans are available for purchase through Techline or any other electrical supplier provided it meets all Bluebonnet Electric Cooperative specifications. Techline (512-332-2978)

No more than four 60-200 amp metersockets and weatherproof main disconnects. No more than one disconnect per enclosure.

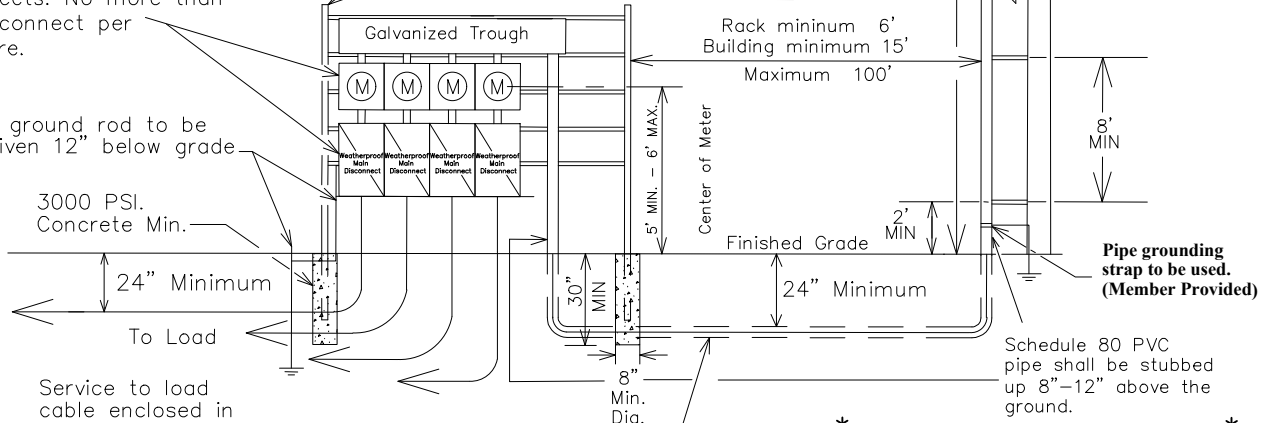
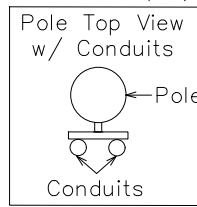
8' ground rod to be driven 12" below grade

3000 PSI. Concrete Min.

24" Minimum

Service to load cable enclosed in minimum schedule 40 nonmetallic conduit.

Equipment rack 2" or 3" steel pipe with uni-strut horizontal support.



Minimum schedule 40 rigid nonmetallic service conduit below finished grade. No schedule 40 conduit allowed above ground level on source side of main disconnect.

\* WIRING INSTALLATIONS MUST MEET LOCAL GUIDELINES, IF APPLICABLE, SET FORTH BY CITY, COUNTY, OR OTHER GOVERNING ENTITY IN THE EVENT THESE REQUIREMENTS ARE MORE STRINGENT THAN BLUEBONNET SPECIFICATIONS. \*

FOR THE MEMBER'S SAFETY, WIRING INSTALLATION AND MATERIAL SHALL CONFORM TO THE REQUIREMENTS OF THE NEC, TDLR AND NESC.

Latest update can be found at [www.bluebonnetelectric.coop](http://www.bluebonnetelectric.coop)

CURRENT CARRYING CAPACITIES AND CONDUIT/NIPPLE SIZE REQUIREMENT OF STANDARD WIRE SIZE. (RHH, RHW, THW, THWN, THHN, AND XHHW) REFER TO NEC FOR OTHER CALCULATIONS.					
WIRE SIZE	COPPER CONDUCTOR/ BREAKER SIZE	CONDUIT/NIPPLE SIZE	WIRE SIZE	ALUMINUM CONDUCTOR BREAKER SIZE	CONDUIT/NIPPLE SIZE
#6	60 AMP	1/4" CONDUIT	#4	60 AMP	1/4" CONDUIT
#4	100 AMP	1/4" CONDUIT	#2	100 AMP	1/4" CONDUIT
#2	125 AMP	1/2" CONDUIT	#1/0	125 AMP	1/2" CONDUIT
#1	150 AMP	2" CONDUIT	#2/0	150 AMP	2" CONDUIT
#2/0	200 AMP	2" CONDUIT	#4/0	200 AMP	2" CONDUIT

1Ø OR 3Ø 60-200 AMP MULTIPLE METERS ON RACK OR BUILDING NOT TO EXCEED A TOTAL OF 800 AMPS



DATE	REVISIONS	Drawn By :	Checked By :	Approved By :
12-07-2017	ADDED WIRE SIZING CHART.	RG	MS COMMITTEE	MS COMMITTEE
11-19-2019	ADDED SOLID COPPER NOTE.	Scale :	Date :	
11-04-2021	ADDED MAIN BREAKER NOTE.	NONE	11-04-2021	MS-105