

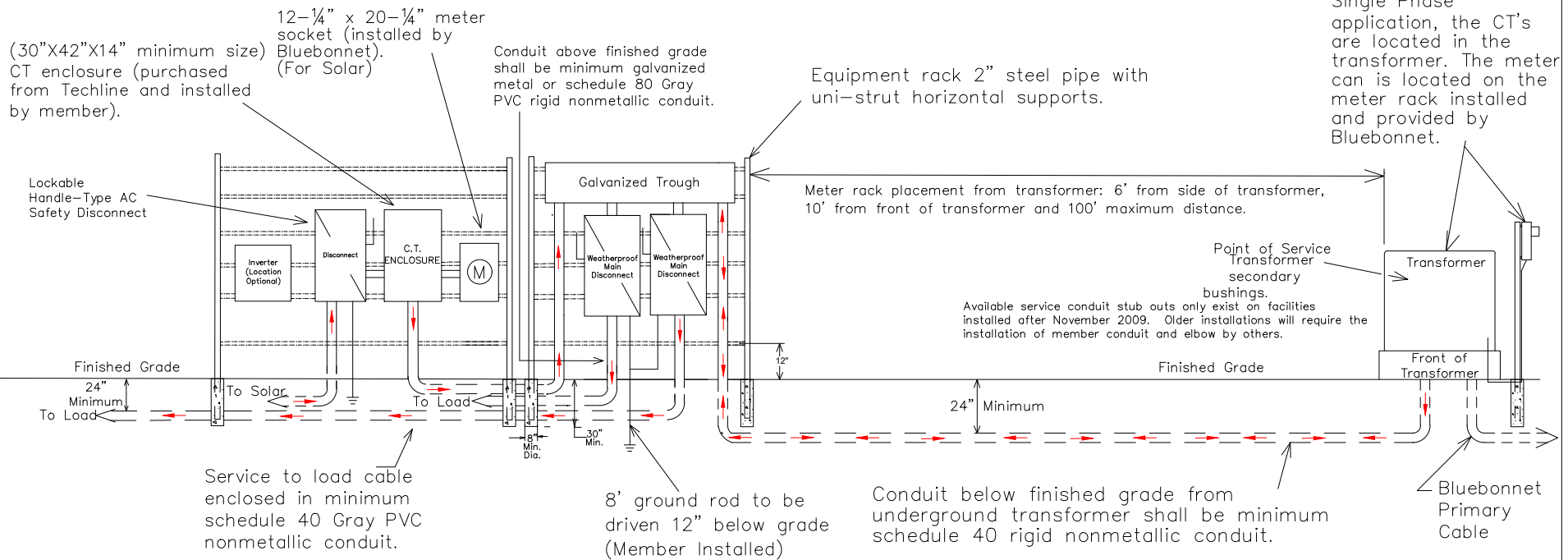
**Notes:**

1. DG Disconnect within 25' of Main Disconnect. DG meter and Disconnect may be on same rack as main Disconnect.
2. Weatherproof fittings required.
3. Inspection required by local Jurisdiction if applicable.
4. DG Disconnect clearly labeled and identified.
5. Bluebonnet to provide the CTs.
6. Meter assembly must remain unenclosed on exterior of structure.
7. DG Meter Rack (If Applicable) shall be a minimum of 6' away from Bluebonnet's pole and/or equipment.
8. The main electrical disconnect for each electrical service, and the main solar/battery disconnect(s) shall be installed, on the exterior of the building in a location approved by Bluebonnet Electric Cooperative.

FOR THE MEMBER'S SAFETY, WIRING INSTALLATION AND MATERIAL SHALL CONFORM TO THE REQUIREMENTS OF THE NEC, TDLR AND NESC.

Refer to and Use MS-204A1 for main disconnect details.

\* WIRING INSTALLATIONS MUST MEET LOCAL GUIDELINES, IF APPLICABLE, SET FORTH BY CITY, COUNTY, OR OTHER GOVERNING ENTITY IN THE EVENT THESE REQUIREMENTS ARE MORE STRINGENT THAN BLUEBONNET SPECIFICATIONS. \*



Latest update can be found at [www.bluebonnetelectric.coop](http://www.bluebonnetelectric.coop)



50kW OR >= RENEWABLE 1Ø >200 AMPS UNDERGROUND SERVICE WITH CT METERING ON DISCONNECT RACK OR BUILDING		Drawn By :	Checked By :	Approved By :
DATE	REVISIONS	SF	DER COMMITTEE	SC
-	-	Scale :	Date :	MS-554-1
-	-	NONE	12-15-2021	