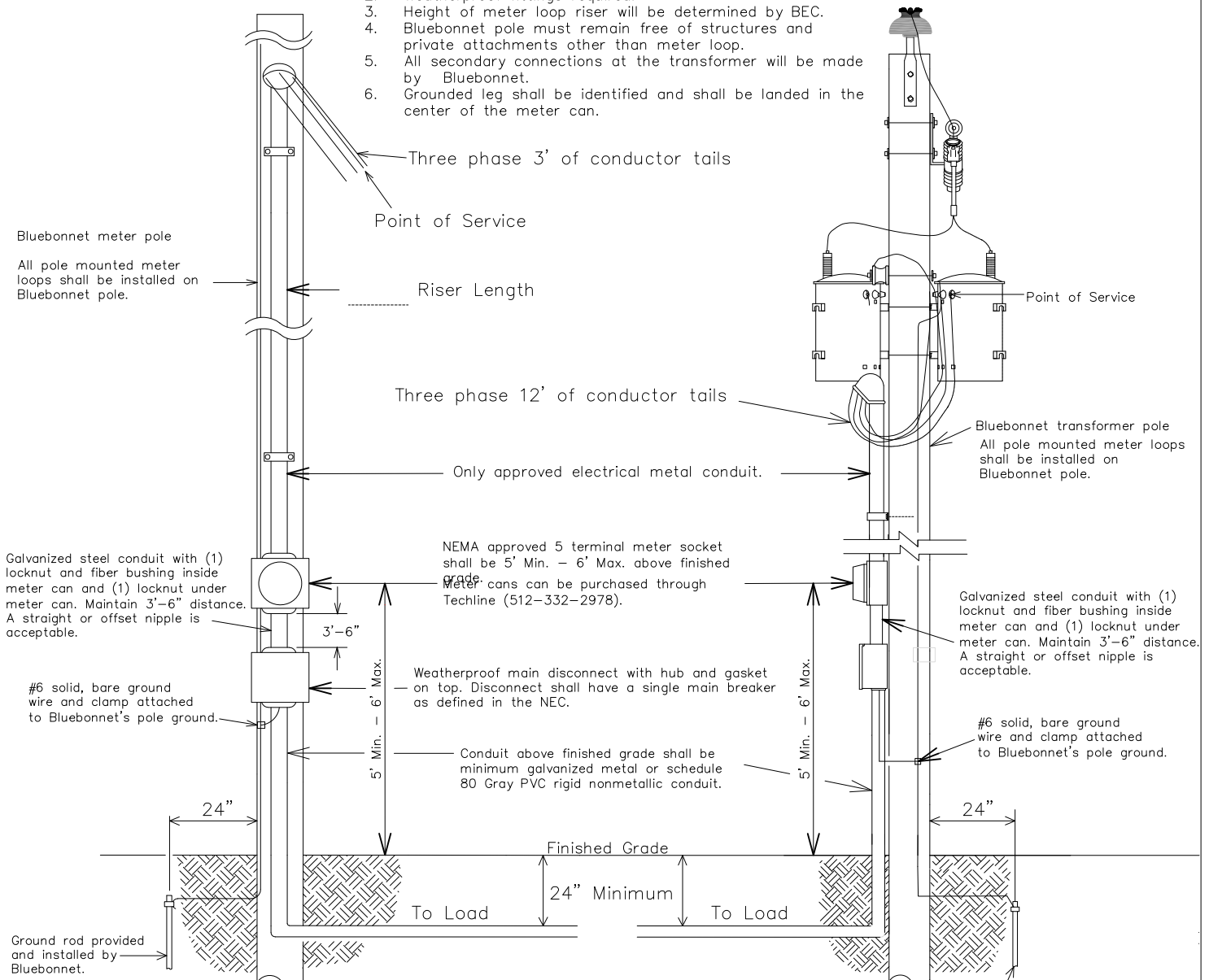


Notes:

1. A Bond wire shall be used, see NEC Table 250.66 for Bond Wire sizing.
2. Weatherproof fittings required.
3. Height of meter loop riser will be determined by BEC.
4. Bluebonnet pole must remain free of structures and private attachments other than meter loop.
5. All secondary connections at the transformer will be made by Bluebonnet.
6. Grounded leg shall be identified and shall be landed in the center of the meter can.



FOR THE MEMBER'S SAFETY, WIRING INSTALLATION AND MATERIAL SHALL CONFORM TO THE REQUIREMENTS OF THE NEC, TDLR AND NESC.

* **WIRING INSTALLATIONS MUST MEET LOCAL GUIDELINES, IF APPLICABLE, SET FORTH BY CITY, COUNTY, OR OTHER GOVERNING ENTITY IN THE EVENT THESE REQUIREMENTS ARE MORE STRINGENT THAN BLUEBONNET SPECIFICATIONS.** *

Latest update can be found at www.bluebonnetelectric.coop

CURRENT CARRYING CAPACITIES AND CONDUIT SIZE REQUIREMENT OF STANDARD WIRE SIZE—(RHH, RHW, THW, THWN, THHN, AND XHHW) REFER TO NEC FOR OTHER CALCULATIONS.

WIRE SIZE	COPPER CONDUCTOR		WIRE SIZE	ALUMINUM CONDUCTOR	
	BREAKER SIZE	CONDUIT SIZE		BREAKER SIZE	CONDUIT SIZE
#6	60 AMP	1¼" CONDUIT	#4	60 AMP	1¼" CONDUIT
#4	100 AMP	1½" CONDUIT	#2	100 AMP	1¼" CONDUIT
#2	125 AMP	1½" CONDUIT	#1/0	125 AMP	1½" CONDUIT
#1	150 AMP	2" CONDUIT	#2/0	150 AMP	2" CONDUIT
#2/0	200 AMP	2" CONDUIT	#4/0	200 AMP	2" CONDUIT

3Ø, STRAIGHT 480 VOLT
3W CORNER GROUND DELTA
60-200 AMP



DATE	REVISIONS	Drawn By :	Checked By :	Approved By :
12-07-2017	Changed the wording on Note # 6.	RG	MS COMMITTEE	MS COMMITTEE
11-04-2021	Added Main Breaker Note	Scale :	Date:	MS-301A
		NONE	11-04-2021	